



**Waukesha**

**XCP™ Digital Octane Panel**



**Proven Fuel Rating Technology**





# The XCP™ Digital Octane Panel from Dresser Waukesha

Dresser Waukesha has taken the CFR® octane rating units– the Global Leader in Fuel Quality Testing – to a higher level of control and functionality with the new XCP™ Digital Octane Panel.

With advanced ease-of-use features including more automated functions and enhanced documentation, the Digital Octane Panel is now standard equipment on new production units, and may be retrofitted to most existing CFR units. The XCP platform is designed to accept future enhancements as they are made available!

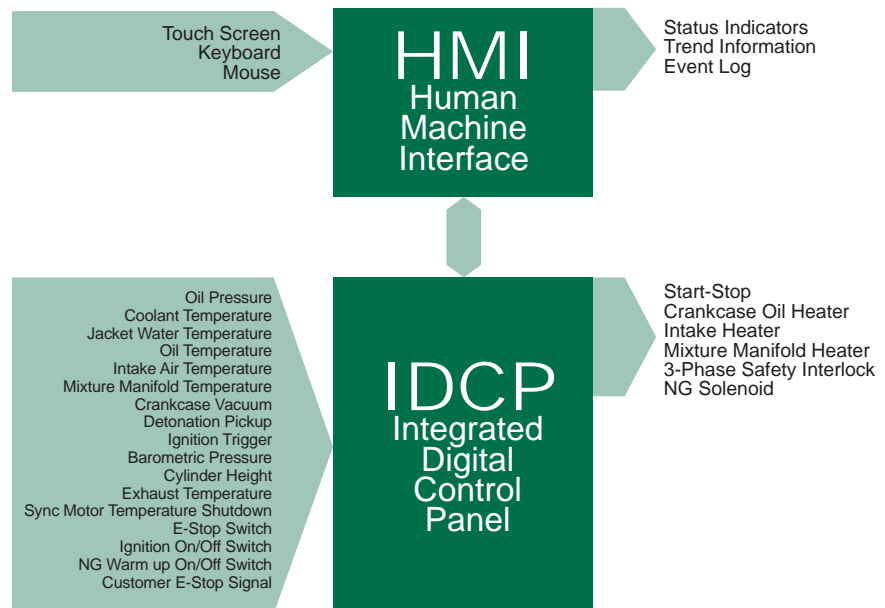
Designed with the operator in mind, the new Digital Octane Panel is user-friendly, intuitive and easily accommodates users with varying levels of operational expertise.

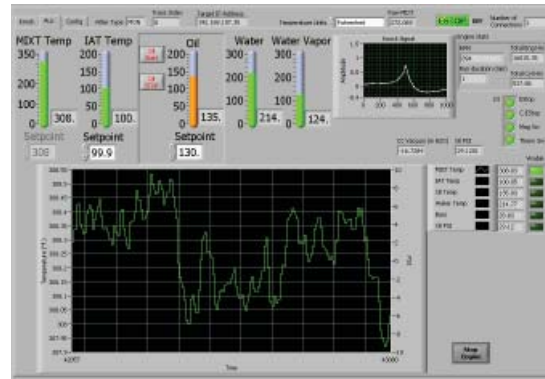
## The XCP™ Digital Octane Panel Offers a Lot – And Delivers!

Ease of operation, increased functionality, and shortened training period are available through a completely re-designed operator panel with touch-screen functionality. More than 30 features are built in and more are coming. The easily configurable and adaptable XCP Digital Octane Panel has the technology built in to adapt to future enhancements/ upgrades.

The Digital Octane Panel features a touch screen and keyboard interfaces for easier use.

### System Diagram





# Features

## Easy-to-Use Panel Interface

The introduction of a touch screen user interface, standard keyboard and intuitive graphic panel translates to a shorter operator proficiency learning curve. Operators can become comfortable and more confident using a CFR with a Digital Octane Panel in days, not months.

The user-friendly touch panel is immediately recognized and accepted by today's computer-savvy work force. On-screen operation & maintenance and parts manuals, on-screen reports and internet capability are standard.

The new operation screens are clear and easy to use, reducing the opportunity for errors. Built-in prompts, automated calculations, and data logging allows operators to be quickly cross-trained for improved work flow.

## Automated Data Recording

Better documentation – critical information for each rating is documented automatically using bold graphics and easy-to-read charts. Fuel rating files are now automatically generated based on fuel name and date and kept on easily accessible Microsoft® Excel® files.

## More Consistent Results

Intuitive software and easy adjustments have been designed in to ensure the XCP will produce consistent reliable results from operator to operator.

## Report Generation

As tests are completed, the XCP produces test results with all curves, calculations, tables, date stamps and engine records – a big time saver over manually recording results!

## Increased Throughput

Lab supervisors may face the dilemma of a leaner work force and the need through the use of more cross trained operators to produce more octane tests per shift. Not only can more operators be trained on the easier to use XCP unit, there is no need to constantly monitor it when running a Falling Level procedure.

## Reduced Maintenance

Incorporating the use of state-of-the-art technology improves durability and reduces maintenance. In addition, a built-in maintenance log records engine hours, cylinder hours and oil change Intervals.

## Safety

An emergency stop switch on the panel is an immediately recognizable part of its enhanced safety capabilities. The Digital Octane Panel meets all CE Mark requirements.

## Retrofit Capability

The XCP platform is designed to accept future enhancements as they are made available!

The CFR octane rating units made since 1970 may be retrofitted with a Digital Octane Panel.

## Planned Future Enhancements

- LIMS - Laboratory Information Management System
- MODBUS
- Enhanced Motor Protection
- Barometer
- Digital Octane Analyzer



# Summary of Key Changes

| Features               | Legacy  | New Digital Octane Panel   | Benefits  |
|------------------------|---|--|---|
| <b>Control System</b>  | Discrete Controls <ul style="list-style-type: none"> <li>• 501C</li> <li>• Analog Meters</li> <li>Knock Meter</li> <li>Pressure Gauges</li> <li>Mercury Thermometers</li> <li>Hour Meters</li> <li>• Temperature Controller</li> </ul>  | Fully Integrated Digital Controls <ul style="list-style-type: none"> <li>• Digital Knock System</li> <li>• Digital Meters - On Screen</li> <li>Actual Signals, Calculated Values, Trends</li> <li>Transducers for Pressure</li> <li>RTDs for Temperature</li> <li>All Electronic</li> <li>• PID Closed Loop Controls</li> </ul>        | <ul style="list-style-type: none"> <li>• User Friendly</li> <li>• Easy to Read</li> <li>• Ease of Setup</li> <li>• Automatic Controls</li> <li>• More Information</li> <li>• More Robust</li> <li>• Automatic Data Log</li> </ul>                   |
| <b>Data Reports</b>    | <ul style="list-style-type: none"> <li>• Manual Activity</li> </ul>   | <ul style="list-style-type: none"> <li>• Automatic Data Recording</li> <li>• Automatic Graphical Report Generation</li> </ul>  | <ul style="list-style-type: none"> <li>• Microsoft® Excel®</li> <li>• Preserved Data Integrity</li> <li>• Data Sharing</li> <li>• Archiving</li> </ul>  |
| <b>Safeties</b>        | Discrete Controls <ul style="list-style-type: none"> <li>• E-STOP (few installed)</li> <li>• Condenser Temperature Switchgage</li> <li>• Oil Pressure Switchgage</li> <li>• Magnetic Switch Contact</li> <li>• Motor Thermo Guard Switch</li> <li>• Mechanical Reset</li> </ul> | Fully Integrated Digital Controls <ul style="list-style-type: none"> <li>• E-STOP Digital Input</li> <li>• Customer E-STOP Input (Remote)</li> <li>• Condenser Temperature RTD</li> <li>• Oil Pressure Transducer</li> <li>• Magnetic Switch Input</li> <li>• Motor Thermo Guard Input</li> <li>• On Screen Acknowledgement</li> </ul> | Ease of Setup <ul style="list-style-type: none"> <li>• Automatic Event Log</li> <li>• Visual Status with Alarms</li> <li>• Integrated Shutdown System</li> </ul>  |
| <b>Maintenance Log</b> | <ul style="list-style-type: none"> <li>• Manual Activity</li> </ul>   | <ul style="list-style-type: none"> <li>• Electronic Maintenance Log</li> </ul>   | <ul style="list-style-type: none"> <li>• Microsoft® Excel®</li> <li>• Easy Logging for Oil Changes, Carbon Blasting, Cylinder Installation, and Routine Maintenance</li> <li>• Electronic Operation, Maintenance, and Parts Manual (PDF)</li> </ul> |

**Dresser, Inc.**  
**Dresser Waukesha**  
 1101 West St. Paul Avenue  
 Waukesha, WI 53188-4999  
 T. 262 547 3311  
 F. 262 549 2795

Bulletin 1262 09/09

